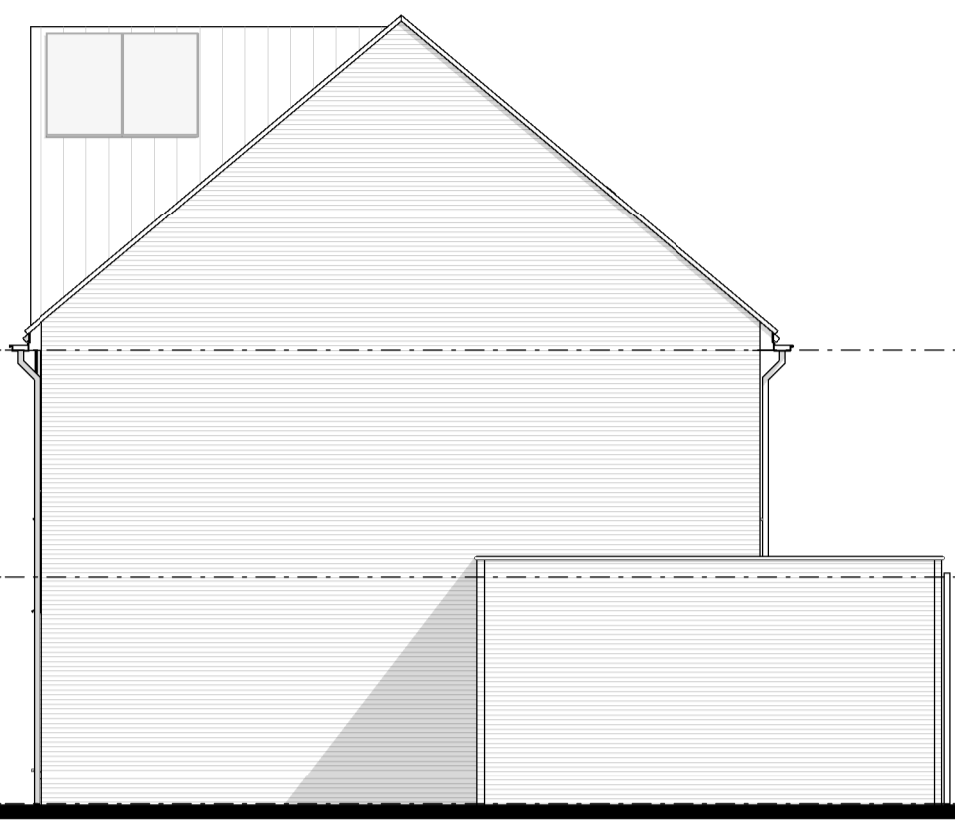




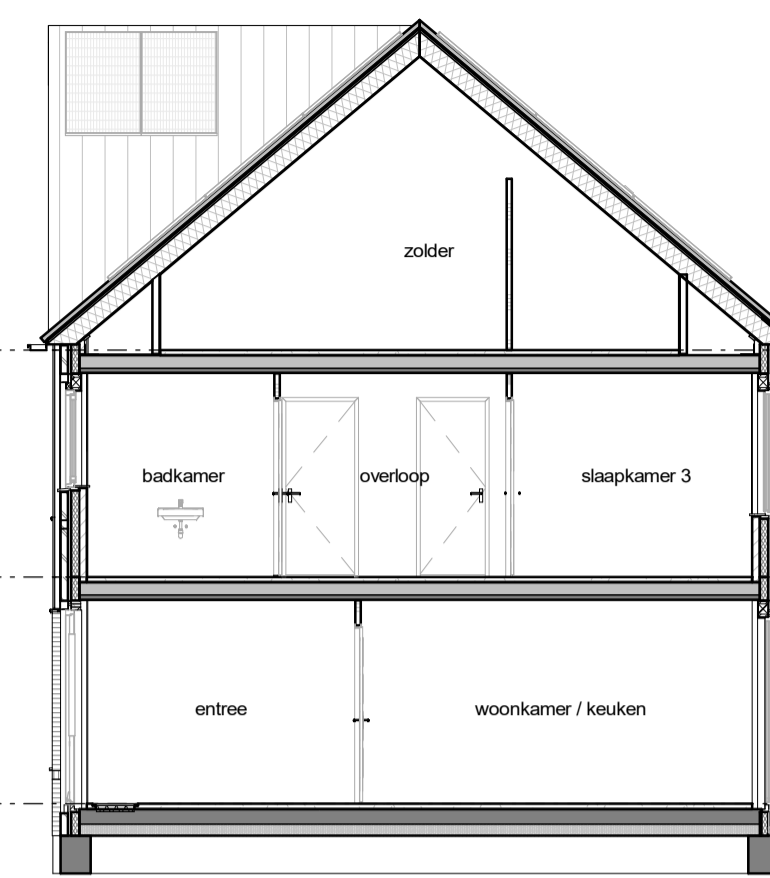
voorgevel



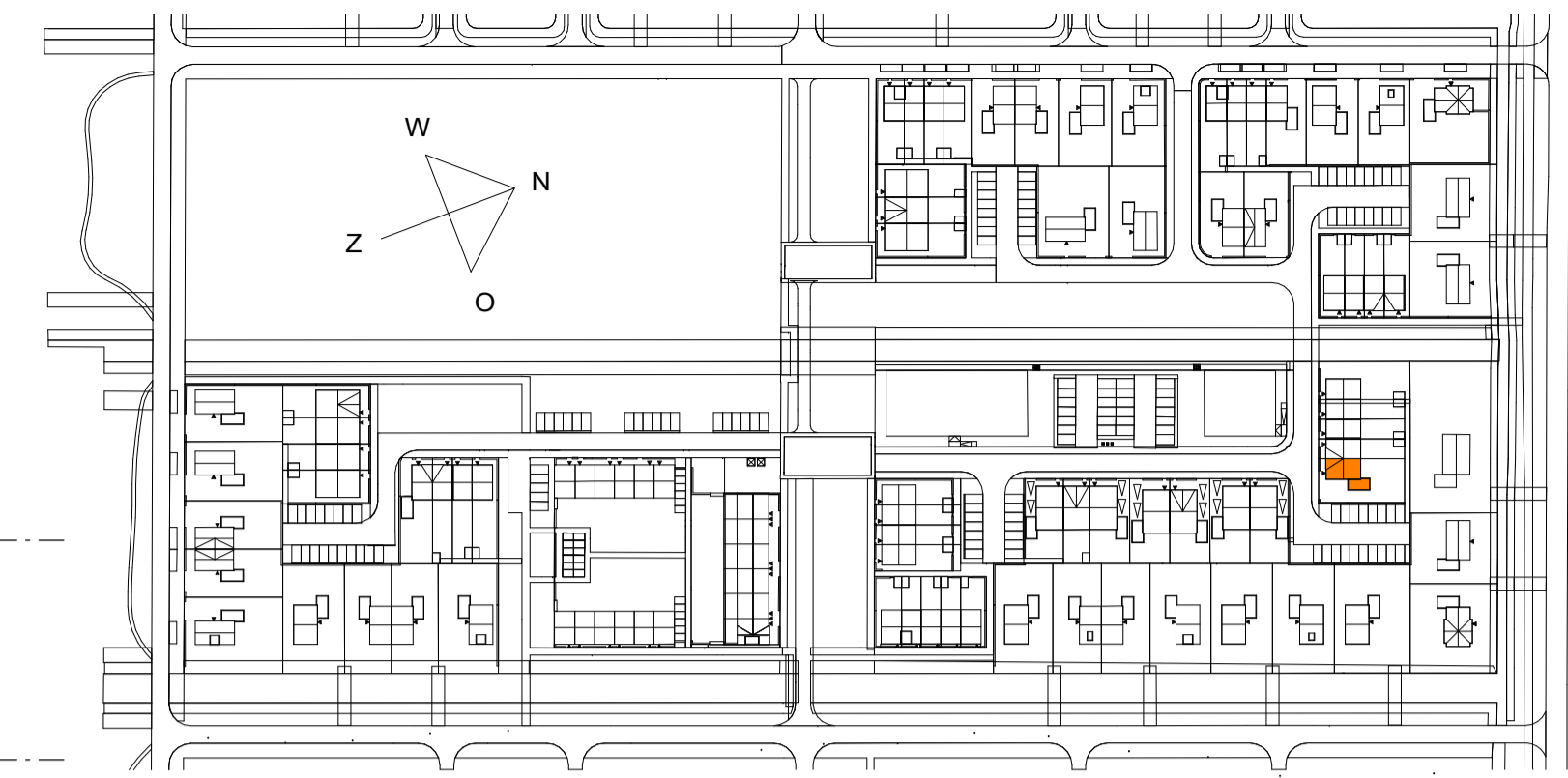
kopgevel



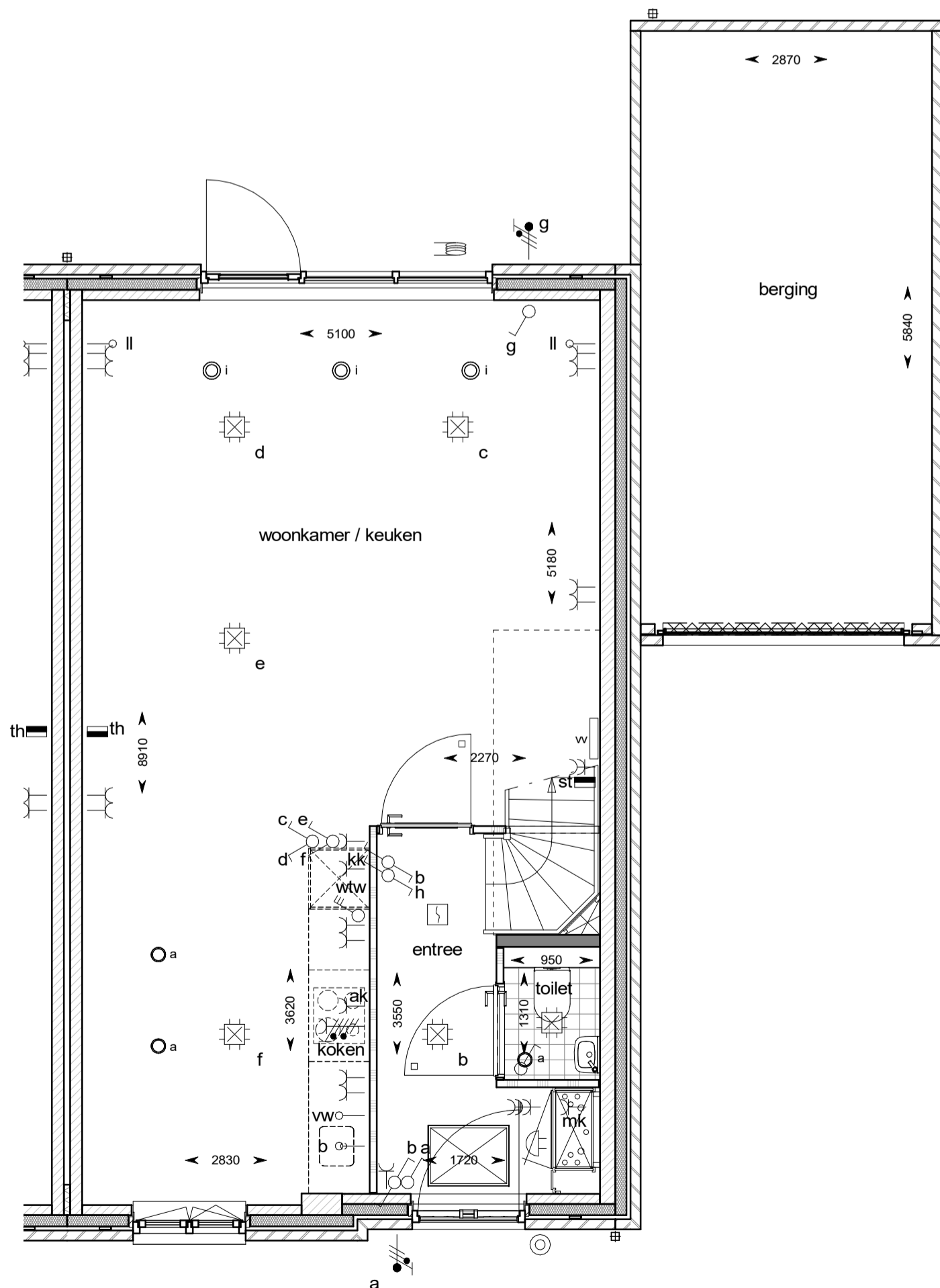
achtergevel



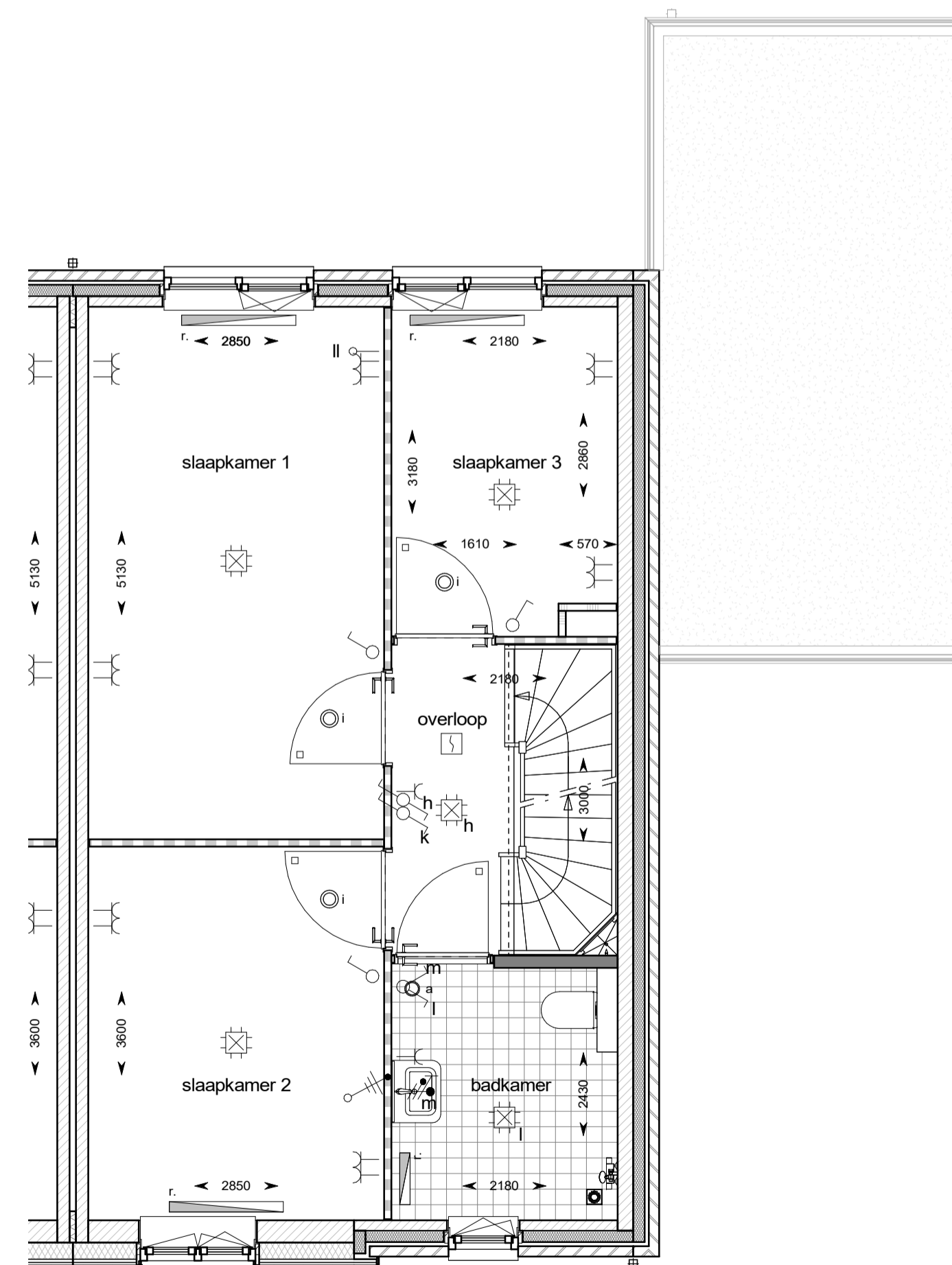
doorsnede



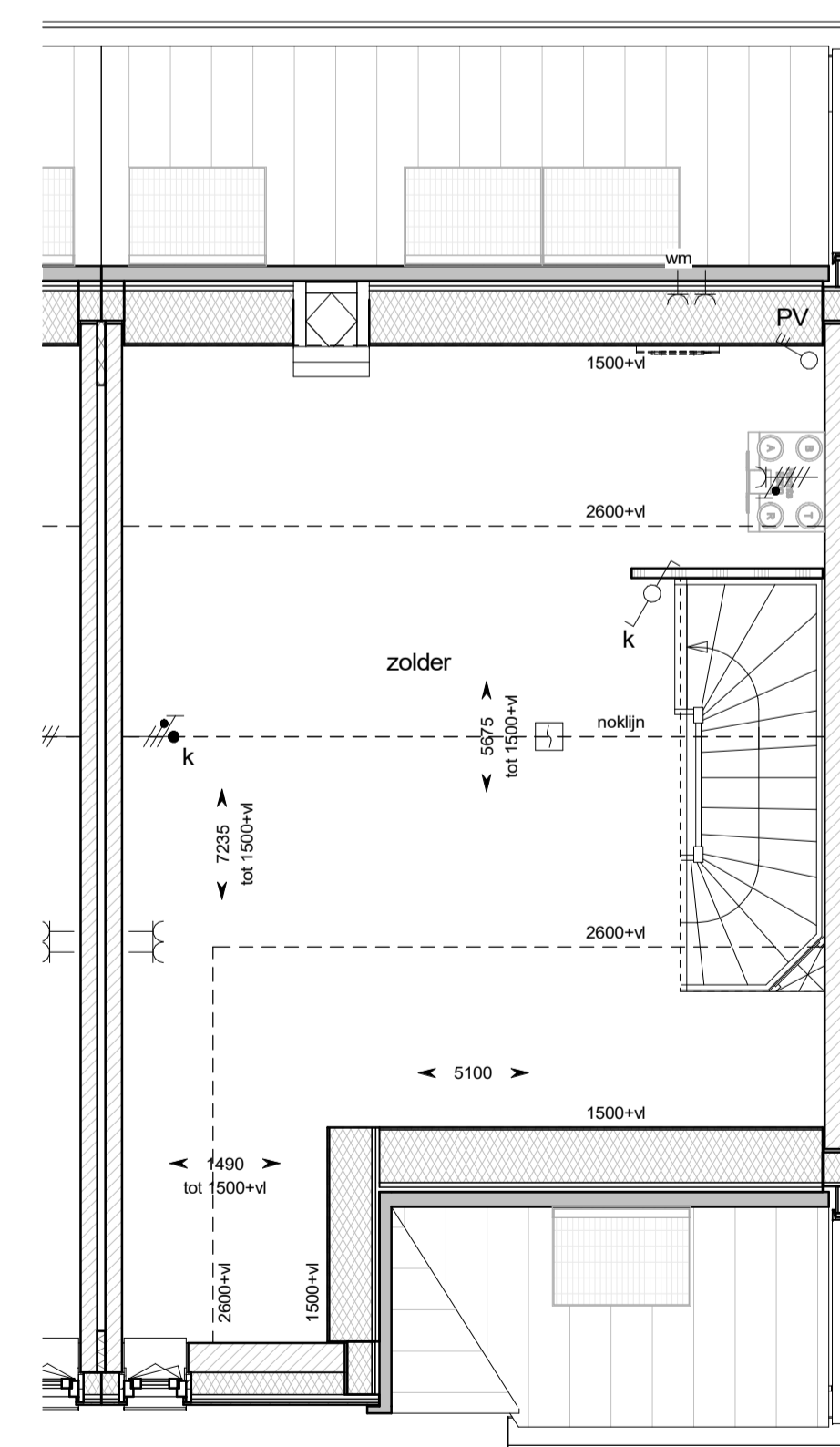
woningaanduiding
1 : 2000



begane grond



eerste verdieping



tweede verdieping

HANS BEEN
ARCHITECTEN BNA

Industrieweg Zuid 24
Postbus 2
+31 (0)343 450 211

3958 VX Amerongen
3958 ZT Amerongen
www.hansbeen.nl

project:
De Keyser - fase 6 en 7

projectnummer:

0365

projectarchitect:

E. Aartsma

onderwerp:

bnr 715

type A2dK1g

schaal:
1:50 / 1:100

datum:
23-09-2022a

formaat:

A1

getekend:

G. Honders

wijziging:

tekeningnummer:

VK-715

project fase:

VK

© All rights reserved by Hans Been Architecten BNA B.V.
Let op! maten in het werk te controleren