



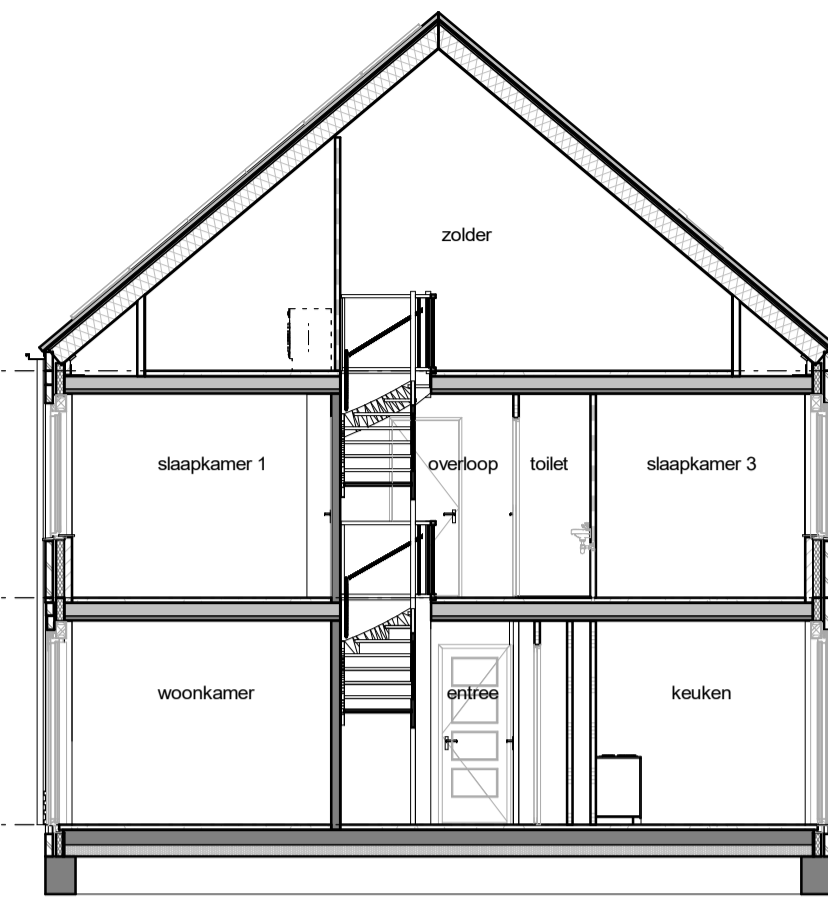
voorgevel



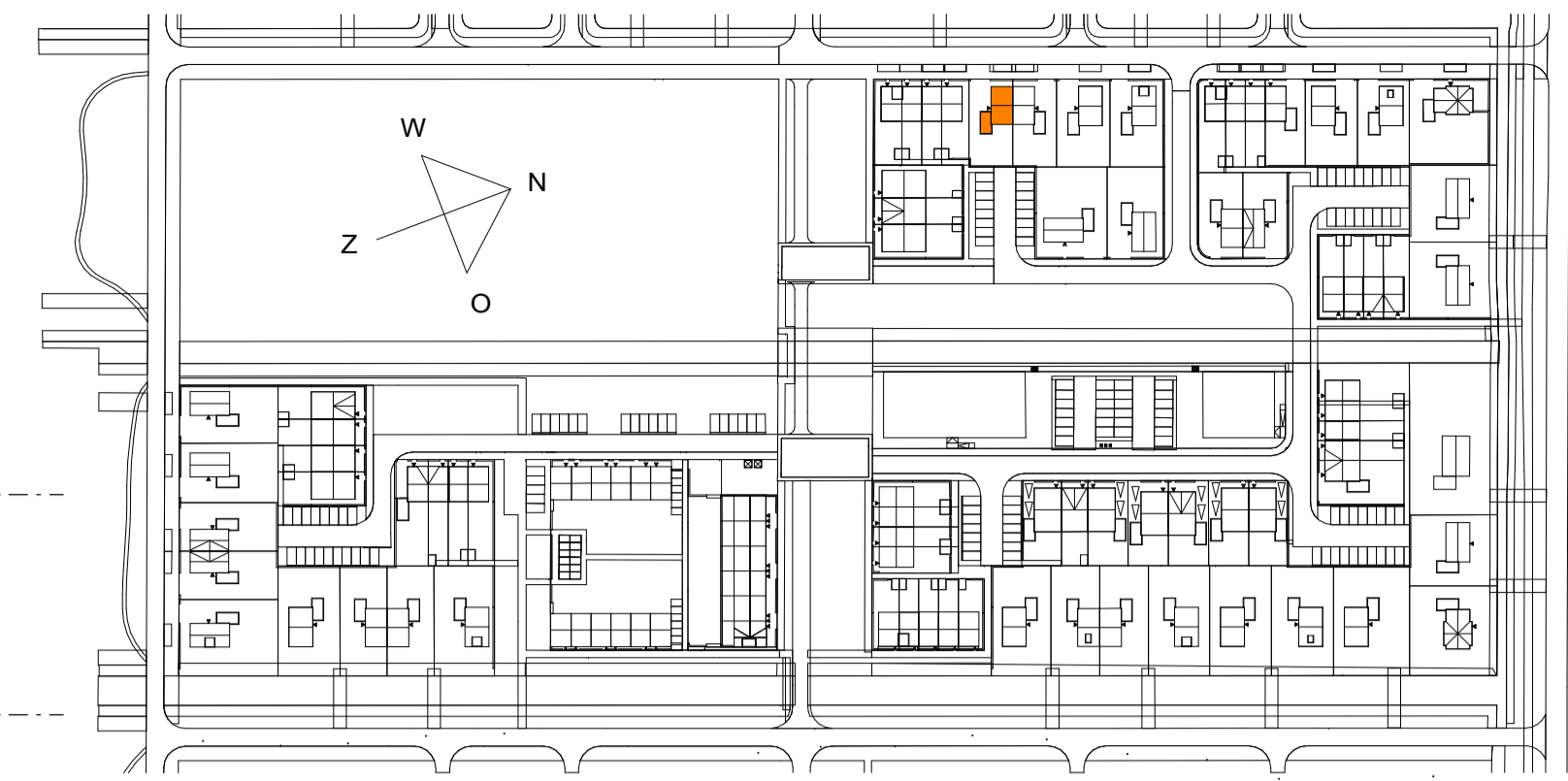
kopgevel



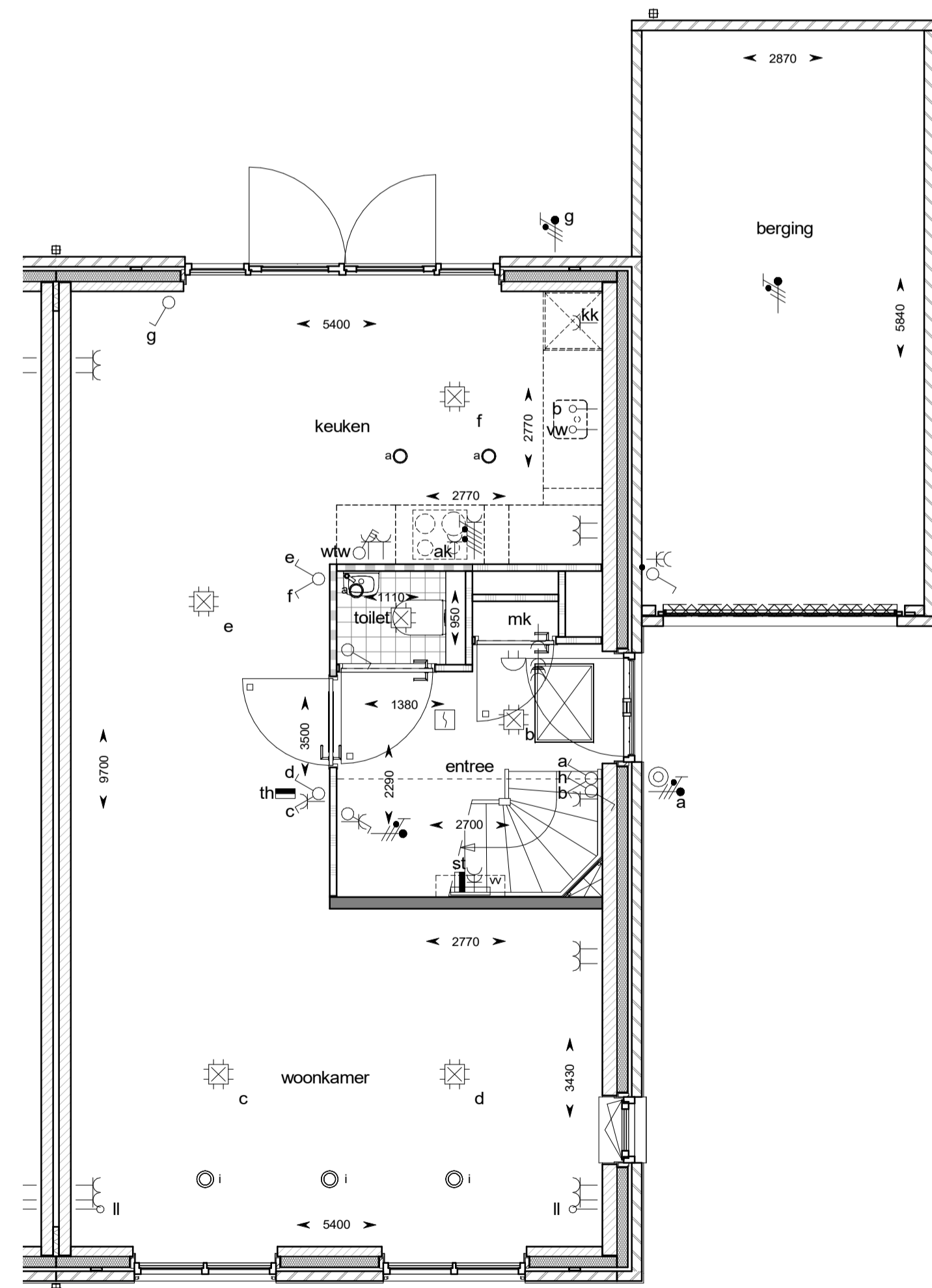
achtergevel



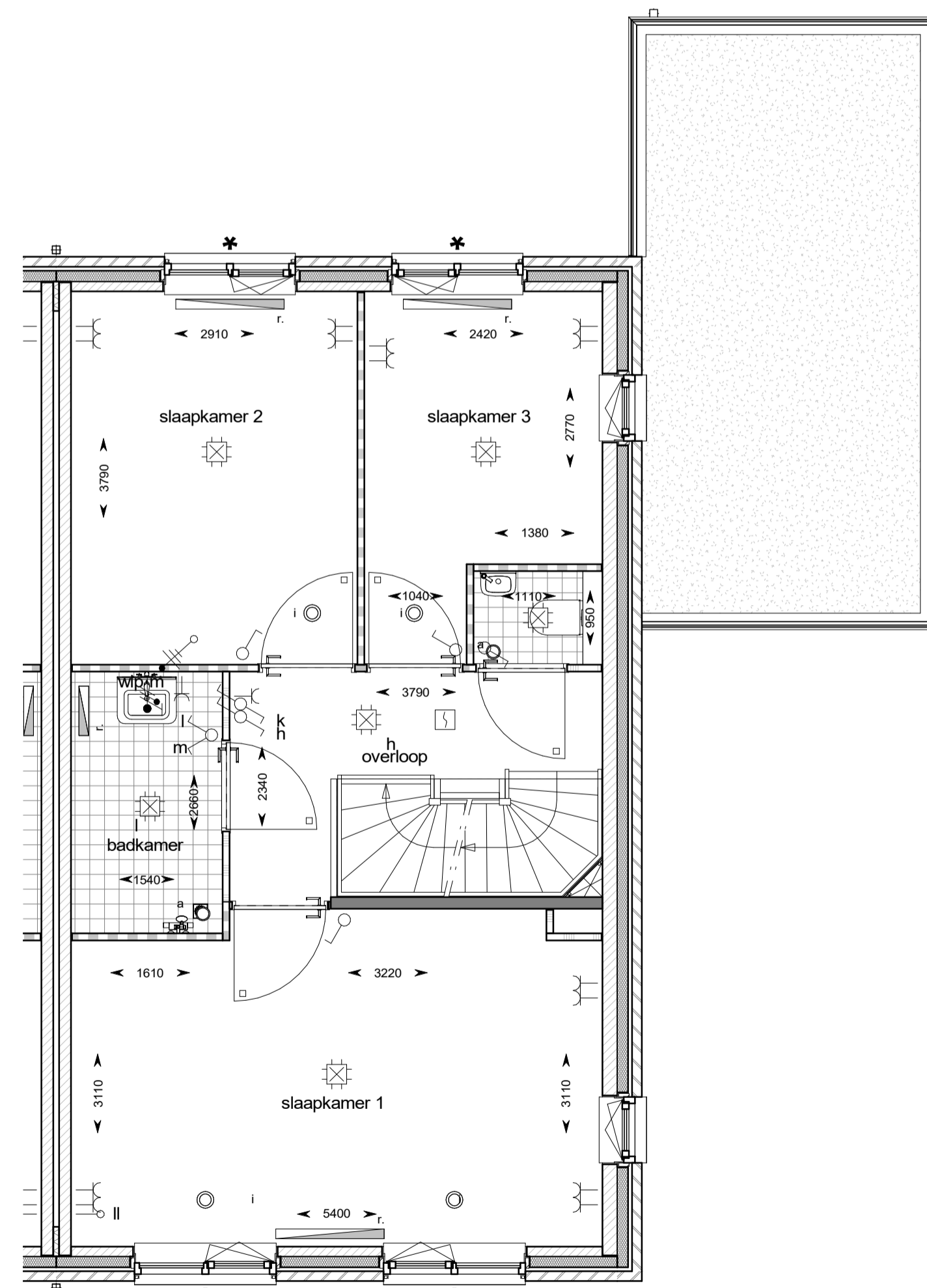
doorsnede



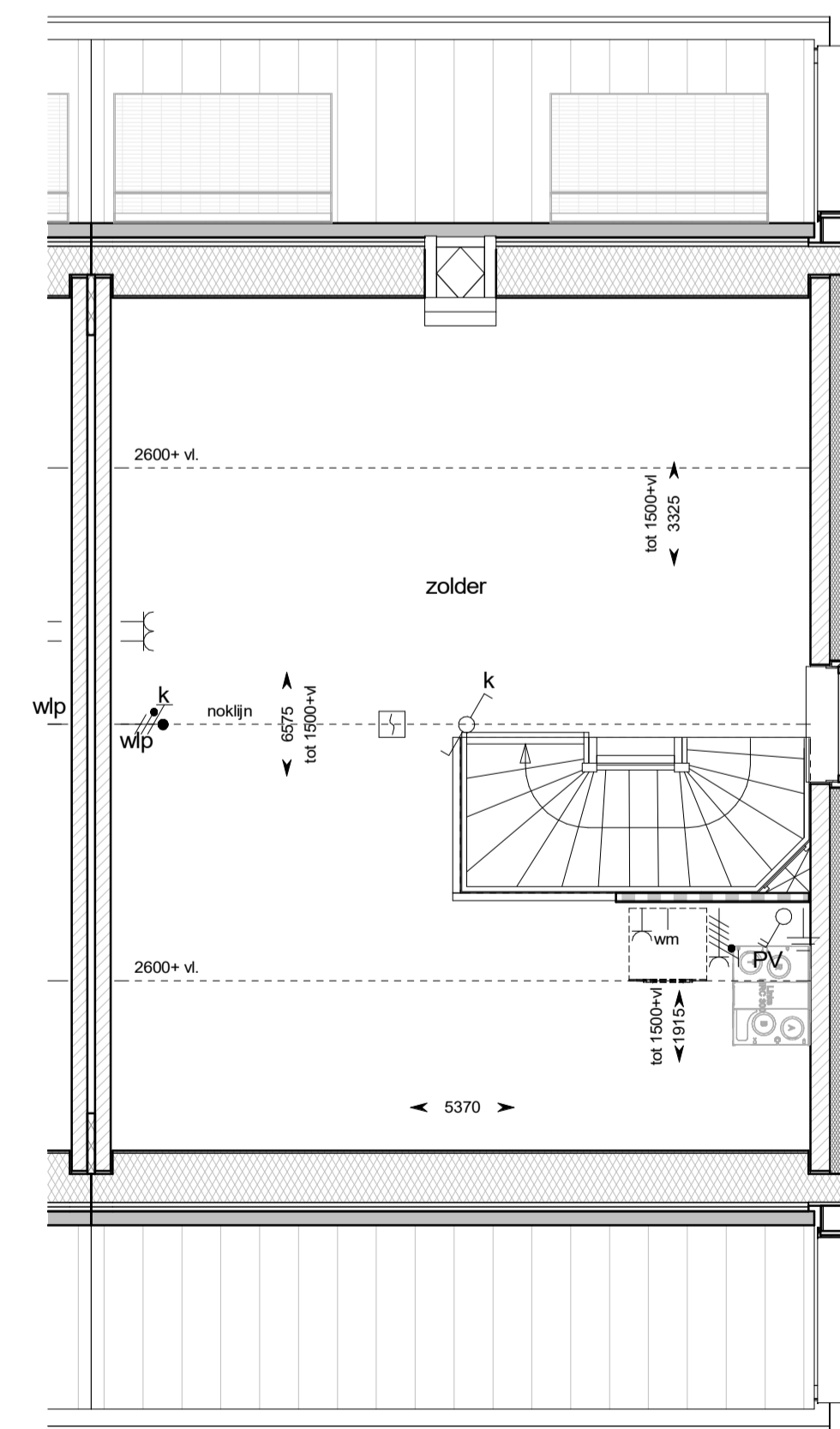
woningaanduiding  
1:2000



begane grond



eerste verdieping



tweede verdieping

**HANS BEEN**  
ARCHITECTEN BNA

Industrieweg Zuid 24  
Postbus 2  
+31 (0)343 450 211

3958 VX Amerongen  
3958 ZT Amerongen  
www.hansbeen.nl

project:  
**De Keyser - fase 6 en 7**

projectnummer:

**0365**

projectarchitect:

**E. Aartsma**

onderwerp:

**bnr-621**

**type D1s**

schaal:

**1:50 / 1:100**

datum:

**11-11-2022**

formaat:

**A1**

getekend:

**H.M. van den Berg**

wijziging:

tekeningnummer:

**VK-621**

project fase:

**VK**

© All rights reserved by Hans Been Architecten BNA B.V.  
Let op! maten in het werk te controleren