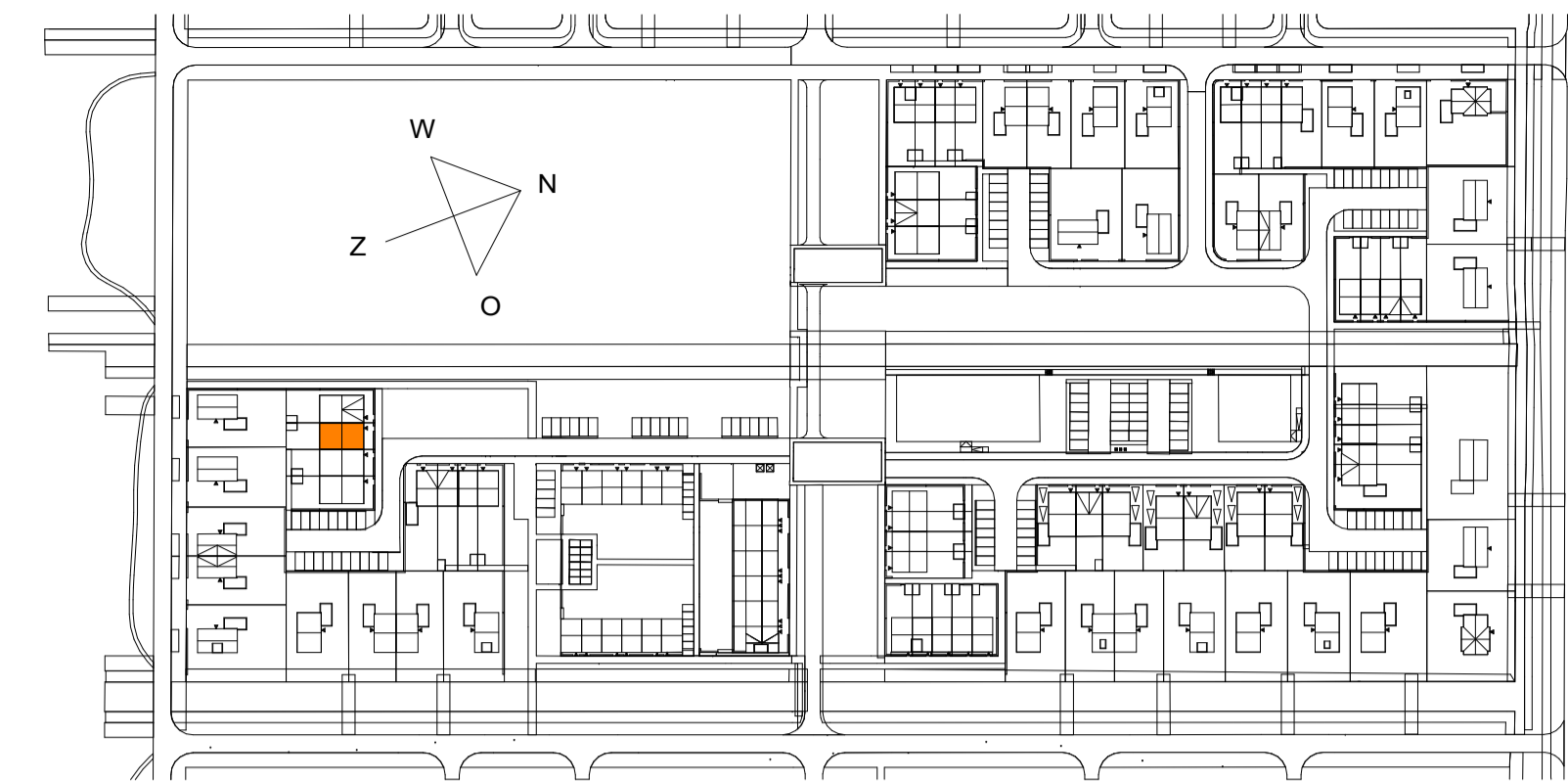




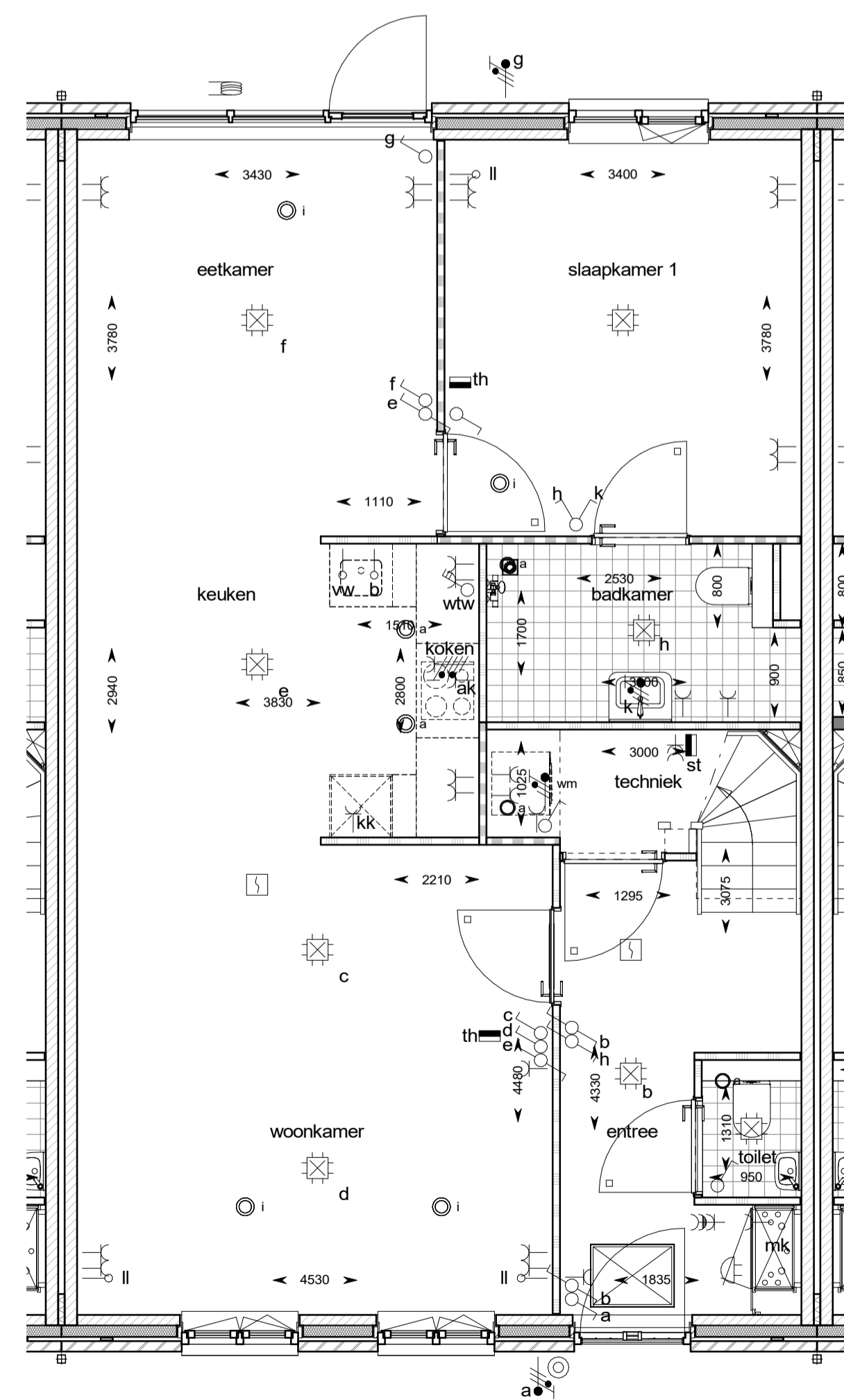
voorgevel

achtergevel

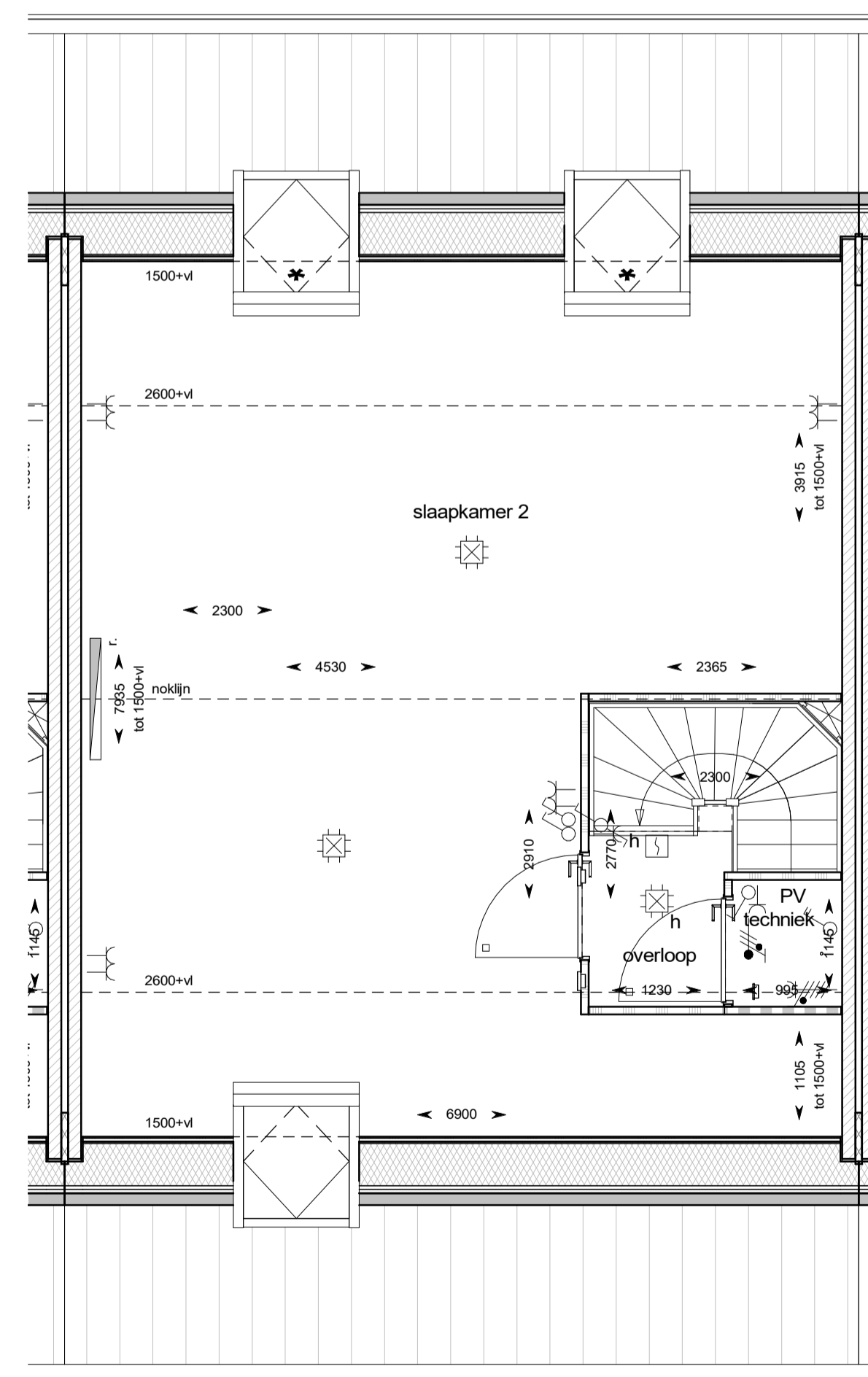
doorsnede



woningaanduiding  
1 : 2000



begane grond



eerste verdieping

**HANS BEEN**  
ARCHITECTEN BNA

Industrieweg Zuid 24  
Postbus 2  
+31 (0)343 450 211

3958 VX Amerongen  
3958 ZT Amerongen  
www.hansbeen.nl

project:  
**De Keyser - fase 6 en 7**

projectnummer:

**0365**

projectarchitect:

**E. Aartsma**

onderwerp:

**bnr 761**

**type B1**

schaal:  
**1:50 / 1:100**

datum:  
**23-09-2022a**

formaat:  
**A1**

getekend:  
**G. Honders**

wijziging:

tekeningnummer:

**VK-761**

project fase:

**VK**